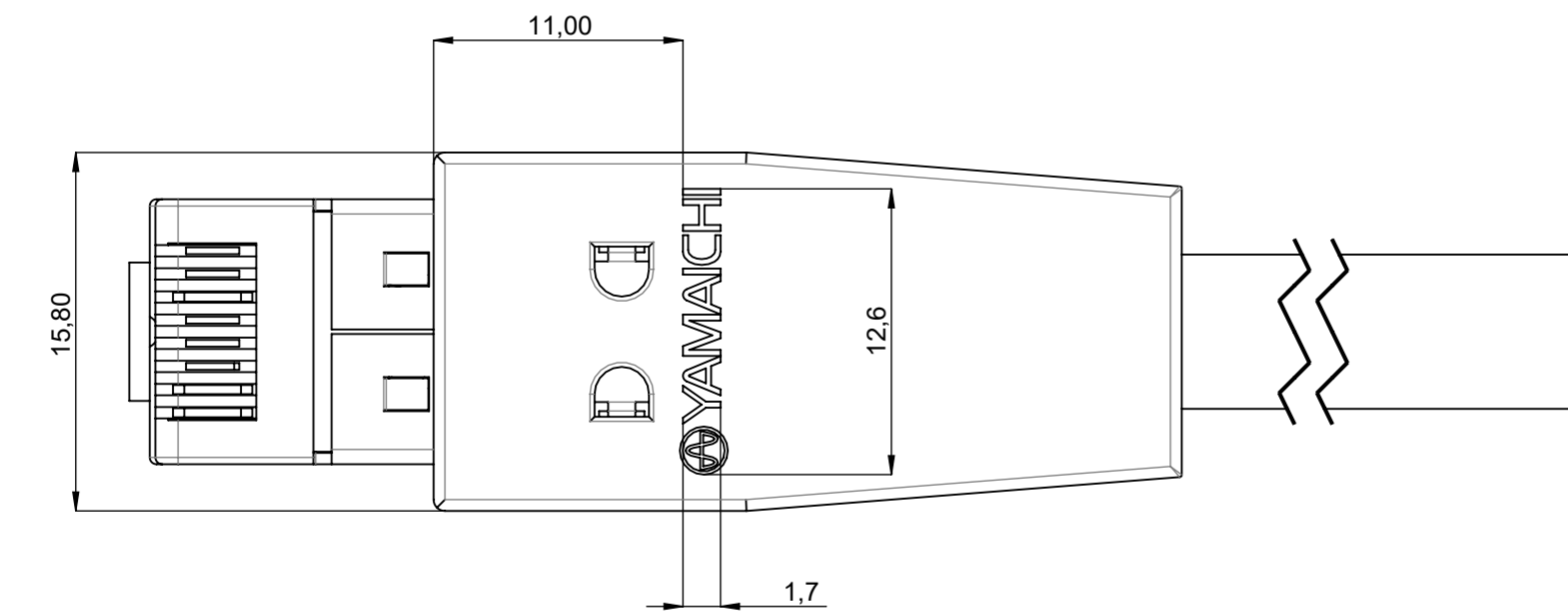
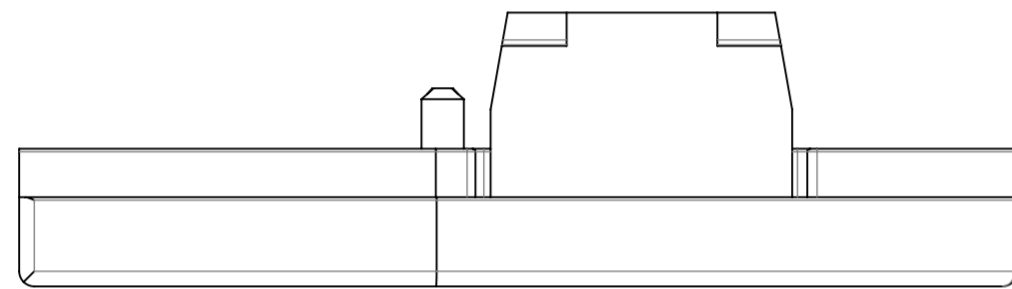
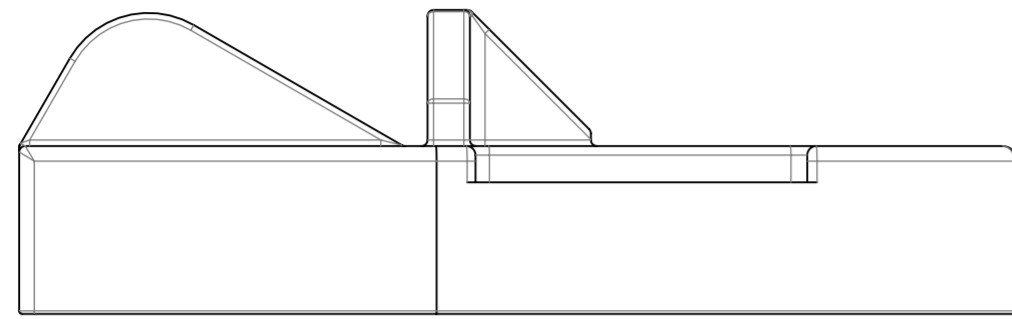
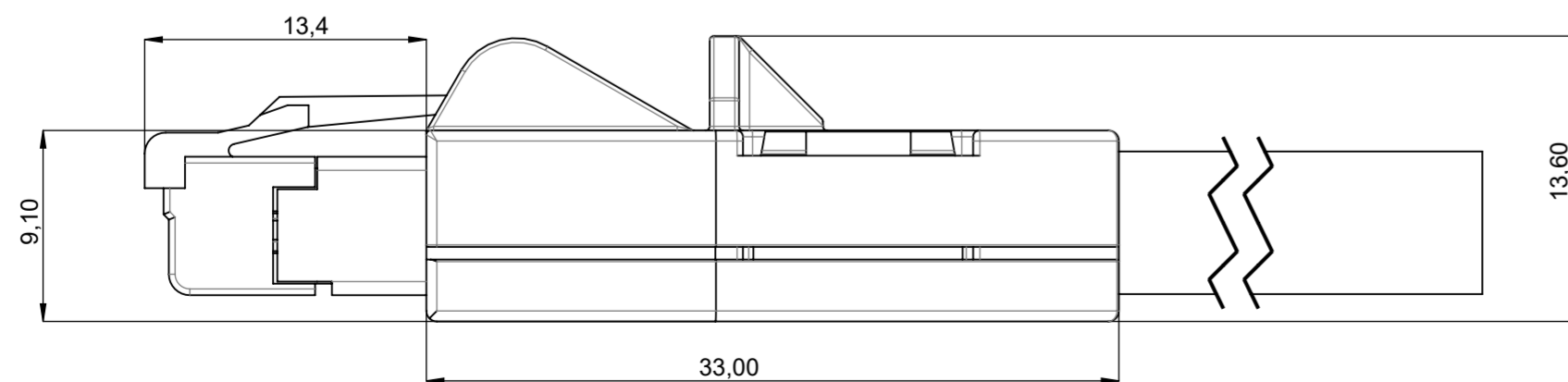


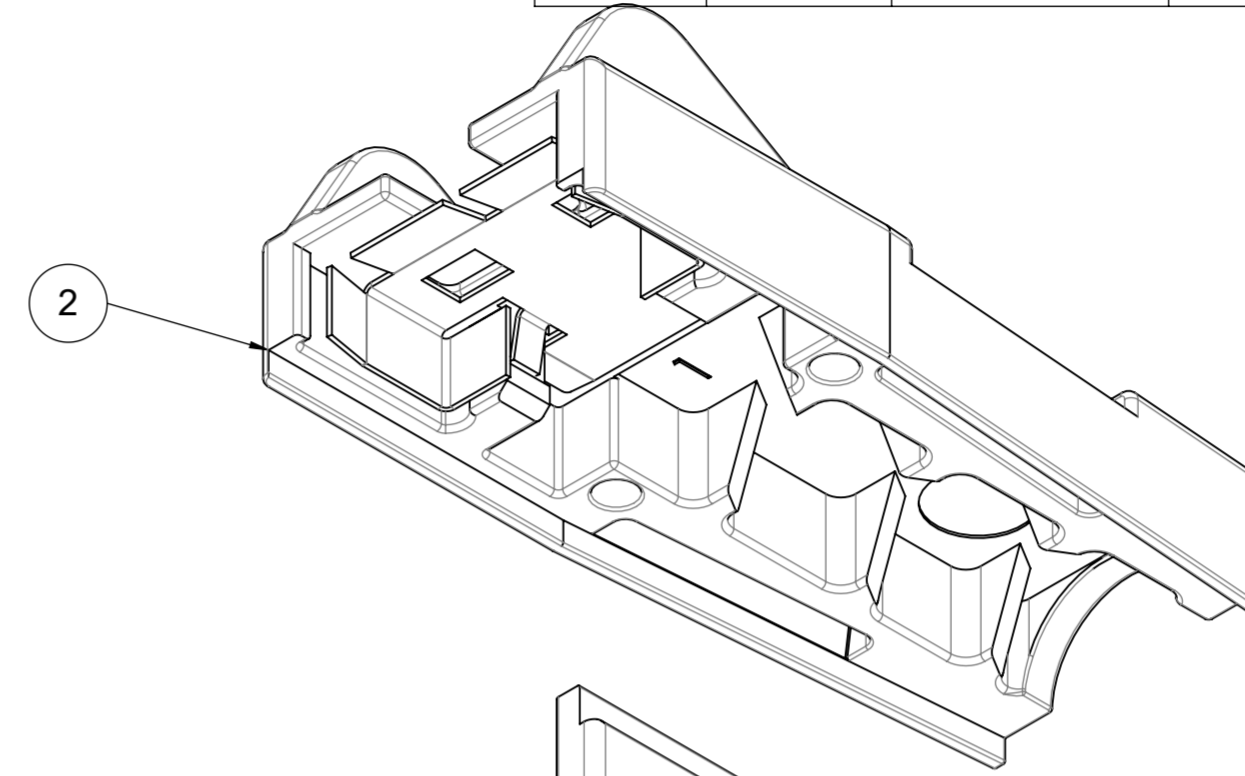
Offen / Open



Schriftzug vertieft 0,2mm  
Logo recessed 0,2mm

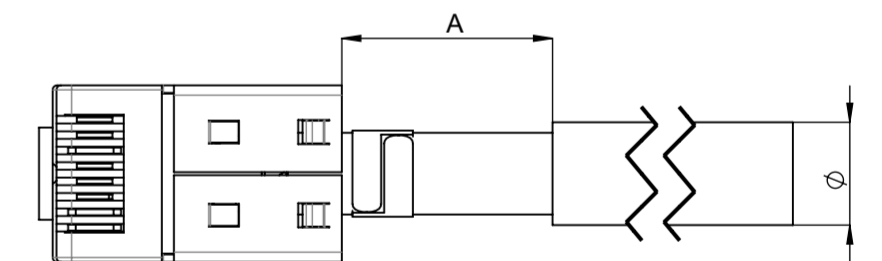
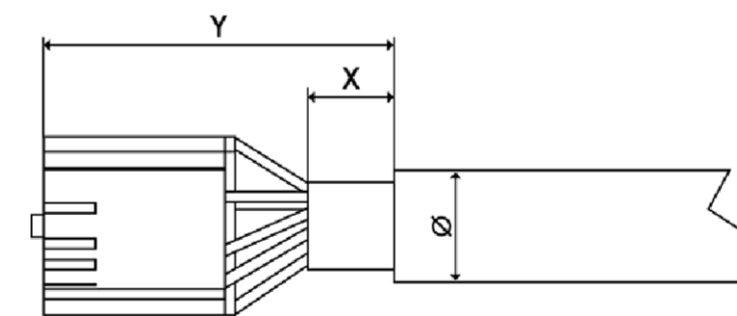
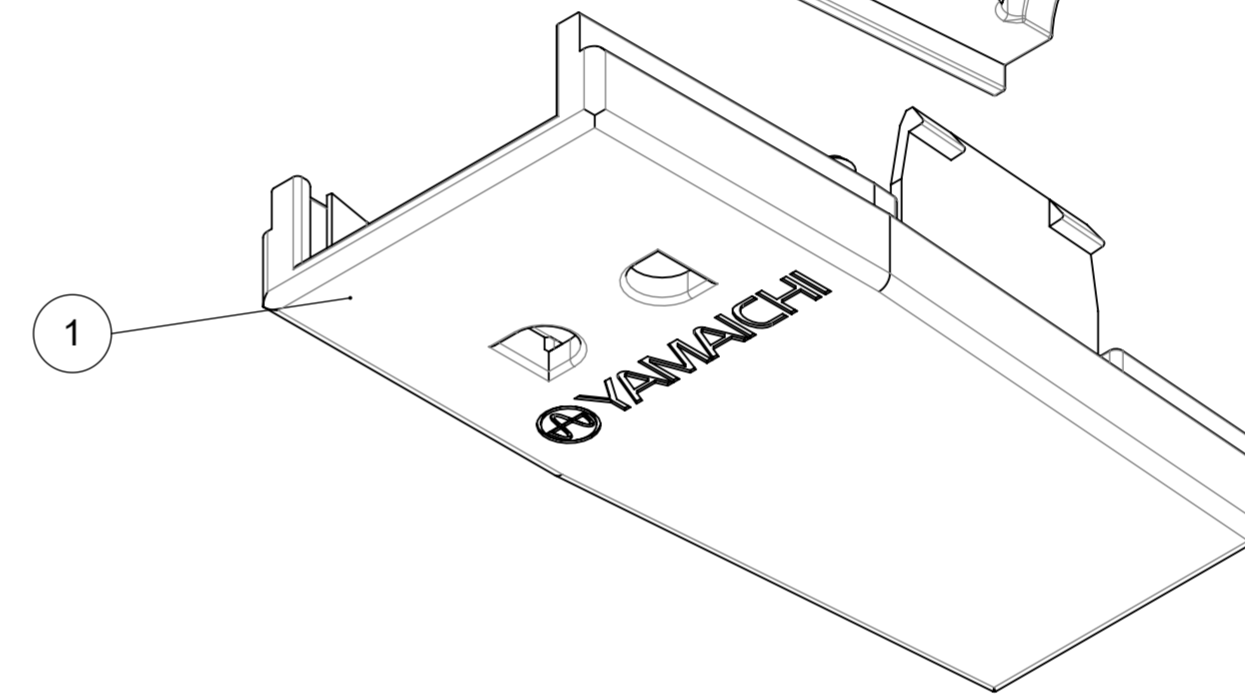


ITEM	QTY.	DRW No	ArtNo	Description
1	1	P2777A03	82-00785	Y-CON COVER-20-TC-OC-KB-Y
2	1	P2777A04	82-00782	Y-CON COVER-20-TC-UC-KB



Ober- und Unterteil:  
Upper and lower part  
Material / Oberfläche:  
Zink Druckguss / Nickel  
Zinc die cast / nickel

Kontaktblech / Shild:  
Material / Oberfläche:  
rostfreier Stahl / Nickel  
Stainless steel / nickel



	Empfohlene Vorbereitung / Recommended Pre-Assembly		Abisolierlängen / Stripping length
Kabeldurchmesser / cable diameter	$X \pm 1mm$	$Y \pm 1mm$	$A \pm 1mm$
Ø5,5-6mm	X=10mm	Y=25mm	6,5mm
Ø6,1-6,6mm	X=15mm	Y=30mm	11,5mm
Ø6,7-7,1mm	X=18,5mm	Y=33mm	15mm

Y-ConPlug-xx ist nicht Bestandteil der Baugruppe

Y-ConPlug-xx is not an integral part of the Y-ConCover-20

Unless otherwise specified :  
Dimensions are in millimeters  
TOLERANCES

REV.	REVISION DESCRIPTION	INITIALS	REV. DATE

**Order / Article No.** 82-00789

DO NOT SCALE DRAWING

CLASSIFICATION: Zinkdruckguss Steckergehäuse

NOTES:	ANGLE PROJECTION:	CREATED	NAME	DATE	TITLE:
A2	FIRST	BL	BL	04.05.2017	Y-CONCOVER-20-TC-Y
		M189	M189	17.12.2019	
		M161	M161	17.12.2019	

DWG NO.: Customer-P2777A07

REVISION: 001

WEIGHT: 15.09 SUBREV:01 SCALE: 5:1 SHEET 1 OF 1 A2 - ASSEMBLY

