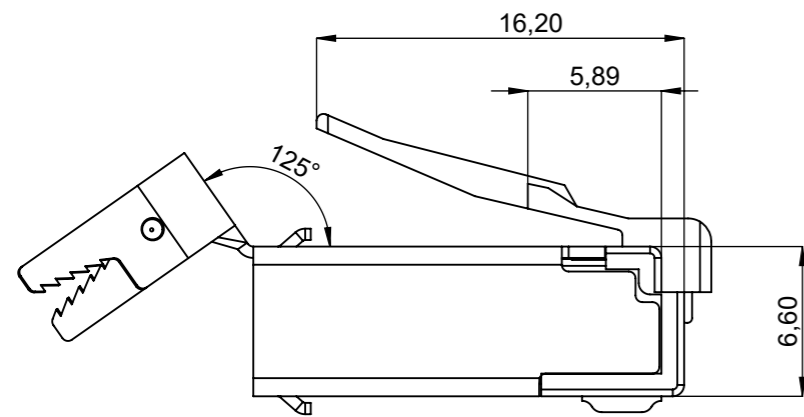
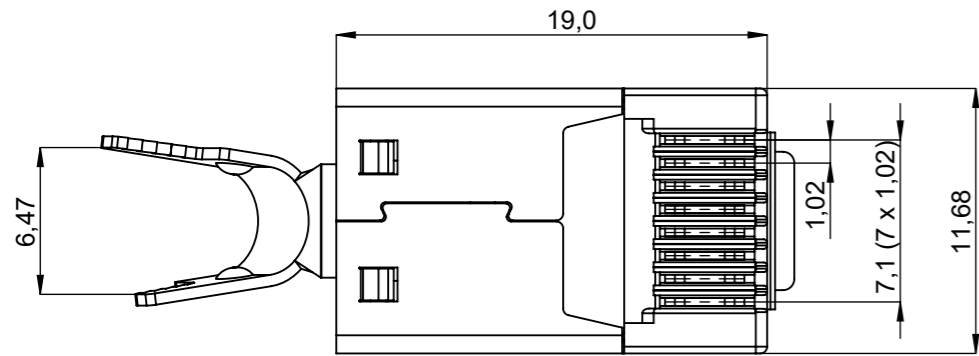
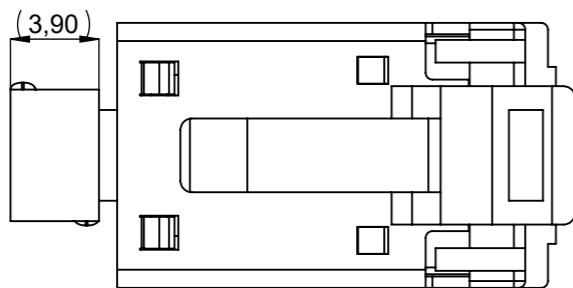
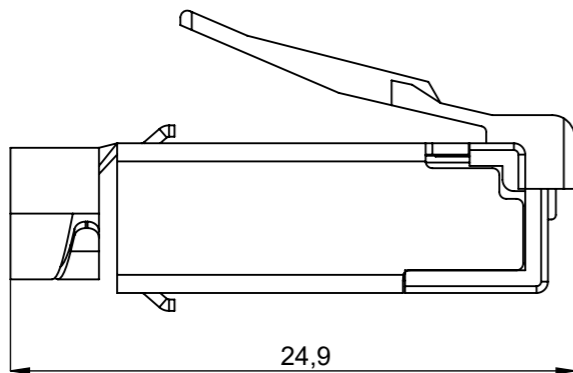


Specification See	Customer-PS1873A02
Packaging See	Customer-PI1873A02

Before crimping

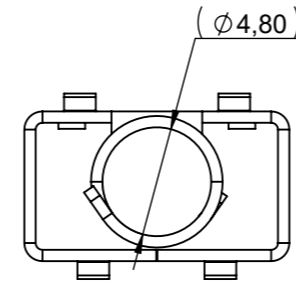


After Crimping

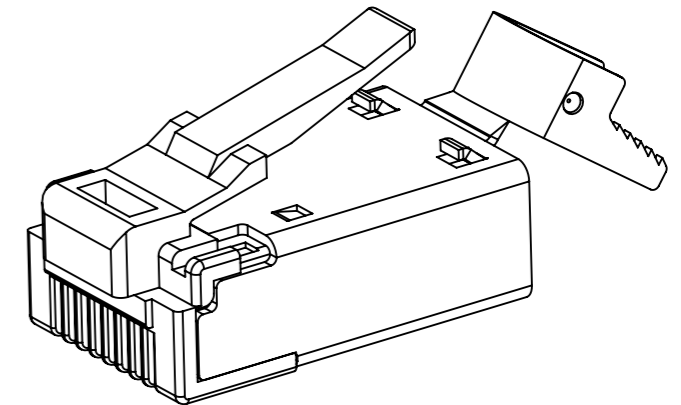
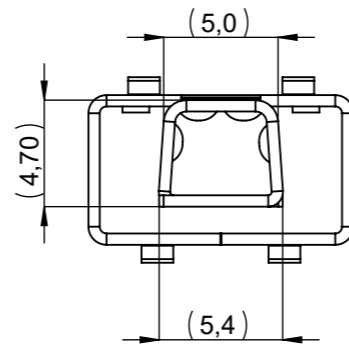


Shield after Crimping

Round Crimp



Square Crimp



Yamaichi acts with all markings of the product exclusively on behalf of the customer as service provider and not as distributor. Yamaichi is not aware of the customer's end use/application. The customer indemnifies Yamaichi from any liability towards third parties in connection with the marking - with the exception of the legal exclusions of liability according to § 309 No. 7 BGB.

- 100% Critical Dimensions to be inspected 100%.
- Critical Dimensions.
- <SPC> Critical Dimensions. To determine Cmk & Cpk.

UNLESS OTHERWISE SPECIFIED : DIMENSIONS ARE IN MILLIMETERS

TOLERANCES:
ISO 2768-1 m (mittel)

CONFIDENTIAL Customer Drawing

RoHS compliant acc. to directive 2011/65/EU Specification/Drawing subject to alteration without prior notice.
The information contained in this drawing is the sole property of YAMAICHI ELECTRONICS DEUTSCHLAND GMBH. Any reproduction in part or whole without the written permission of YAMAICHI ELECTRONICS DEUTSCHLAND GMBH is prohibited.

REVISION	DESCRIPTION	ID	REV. DATE
002		M348	22.12.2021



ORDER / ARTICLE NO. 82-00737

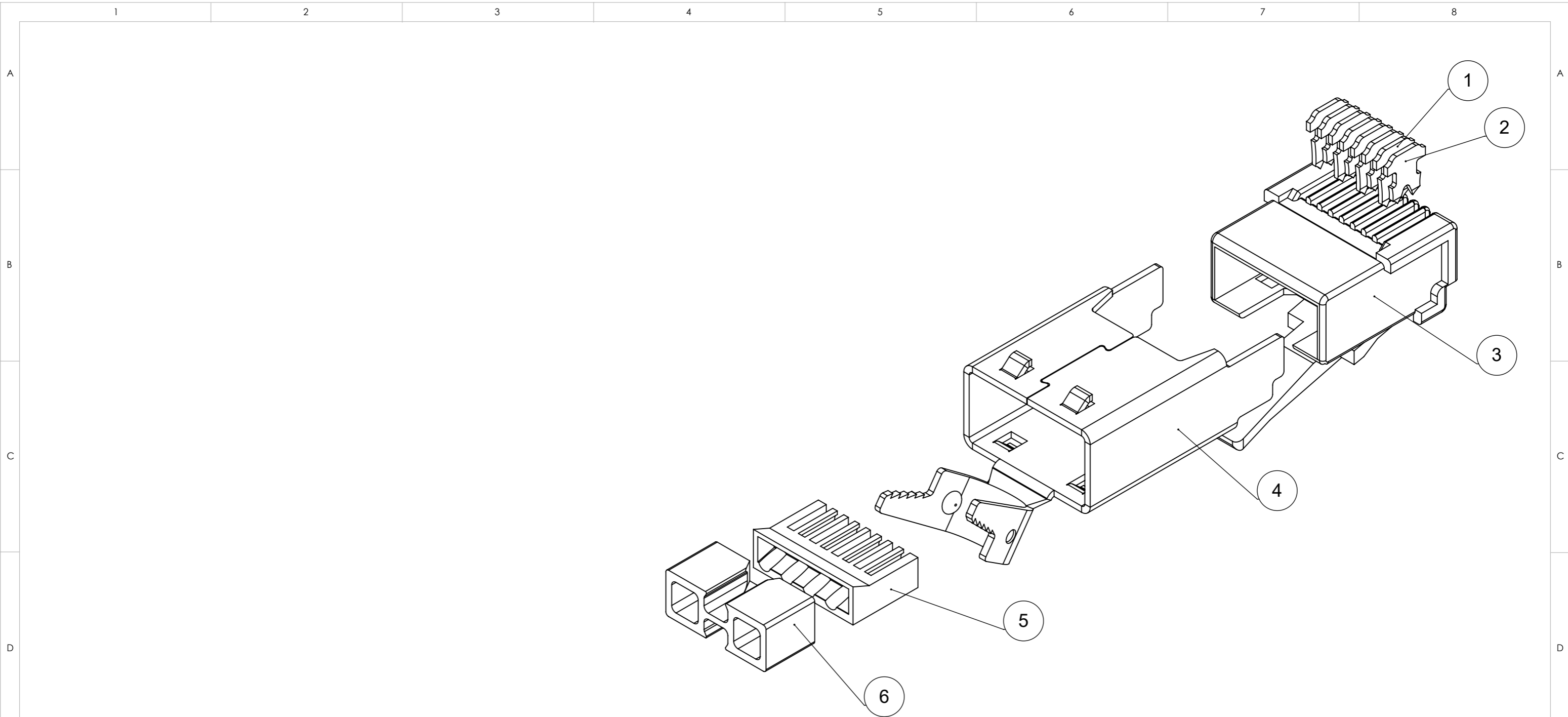
DO NOT SCALE DRAWING

	ID	DATE
CREATED	MOB	24.06.2015
MODIFIED	M348	23.12.2021
RELEASED	M189	11.01.2022

Description: Y-Con RJ45 Stecker, 8 (8+0) ohne Stromkontakte, CAT6A

Purchase No.: Y-CON-P806APCSC-A-T2468

Drawing No.: Customer-P1873A02 REVISION: 002



ITEM NO.	PART NUMBER	Description	QTY.
1	P1873P10	Y-CON-P886A_Long Contact	4
2	P1873P11	Y-CON-P886A_Short Contact	4
3	P1873P08	Y-CON-P886A_Housing	1
4	P1873P09	Y-CON-P886A_Shield	1
5	P1873P05	MG104C6B-11 (Insert)	1
6	P1873P06	MGC6B (Sled)	1

- 100% Critical Dimensions to be inspected 100%.
- Critical Dimensions.
- <SPC> Critical Dimensions. To determine Cmk & Cpk.

UNLESS OTHERWISE SPECIFIED :
DIMENSIONS ARE IN MILLIMETERS

TOLERANCES:
ISO 2768-1 m (mittel)

CONFIDENTIAL **Customer Drawing**

RoHS compliant acc. to directive 2011/65/EU Specification/Drawing subject to alteration without prior notice.
The information contained in this drawing is the sole property of YAMAICHI ELECTRONICS DEUTSCHLAND GMBH. Any reproduction in part or whole without the written permission of YAMAICHI ELECTRONICS DEUTSCHLAND GMBH is prohibited.

REVISION DESCRIPTION	ID	REV. DATE



ORDER / ARTICLE NO. 82-00737

DO NOT SCALE DRAWING

Description: Y-Con RJ45 Stecker, 8 (8+0) ohne Stromkontakte, CAT6A

DATE	ID
24.06.2015	MOB
23.12.2021	M348
11.01.2022	M189

Purchase No.: Y-CON-P806APCSC-A-T2468
Drawing No.: Customer-P1873A02



WEIGHT:

SUBREV02 T123 25.05.2023

REVISION: 002
SCALE: 3:1 SHEET 2 OF 2 DIN A3 - ASSEMBLY

Yamaichi acts with all markings of the product exclusively on behalf of the customer as service provider and not as distributor. Yamaichi is not aware of the customer's end use/application. The customer indemnifies Yamaichi from any liability towards third parties in connection with the marking - with the exception of the legal exclusions of liability according to § 309 No. 7 BGB.