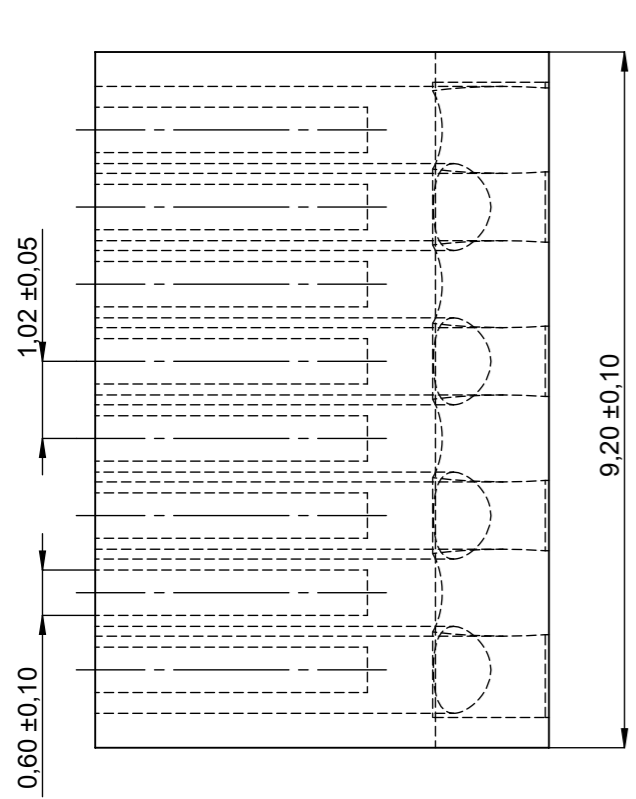
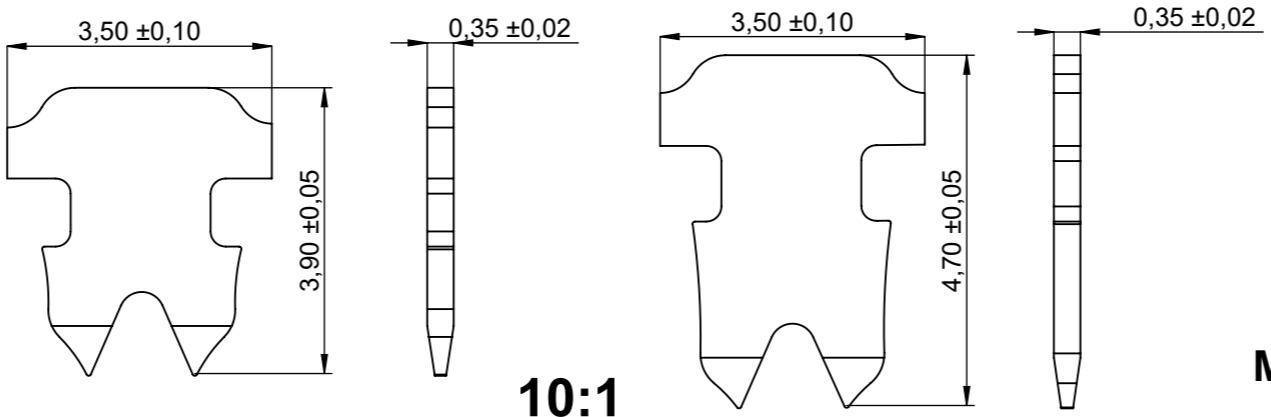


HOUSING



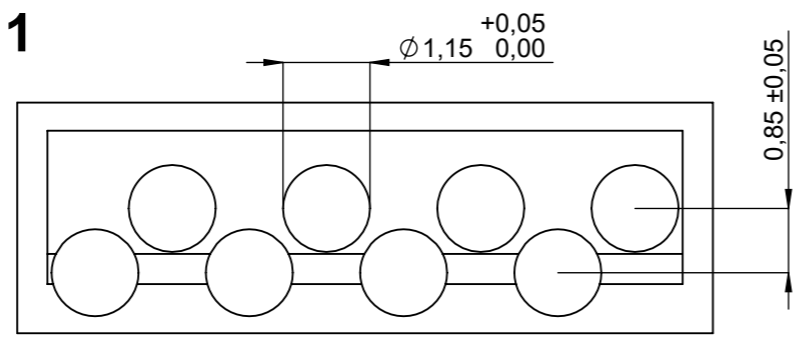
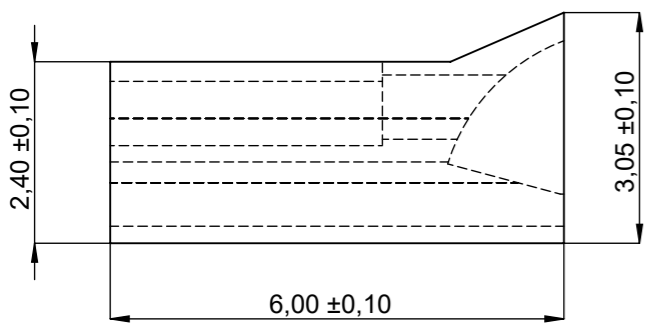
**INSERT
10:1**



**2 PRONGS FOR STANDED WIRE
10:1**

Material & Brand:

1. **Housing** Material: Polycarbonate (PC) UL94V-0.
2. **Insert** Material: Polycarbonate (PC) UL94V-0.
3. Contact Type: **2 Prongs** for Stranded Wire.
4. Gold Plating: 30µ" gold Plating.
5. Contact Material: Phosphor Bronze.
6. Shield Material: Brass with Nickel Plating.
7. Available for 24 or 26 AWG wire.



100% Critical Dimensions to be inspected 100%.
 Critical Dimensions.
 <SPC> Critical Dimensions. To determine Cmk & Cpk.

CONFIDENTIAL Customer Drawing
 RoHS compliant acc. to directive 2011/65/EU Specification/Drawing subject to alteration without prior notice.

The information contained in this drawing is the sole property of YAMAICHI ELECTRONICS DEUTSCHLAND GMBH. Any reproduction in part or whole without the written permission of YAMAICHI ELECTRONICS DEUTSCHLAND GMBH is prohibited.

UNLESS OTHERWISE SPECIFIED : DIMENSIONS ARE IN MILLIMETERS
 TOLERANCES:

△	REVISION DESCRIPTION	ID	REV. DATE



ORDER / ARTICLE NO. 24-02741

DO NOT SCALE DRAWING Description: Standard RJ45 Plug 8(8) Cat6 crimping version, PC, shielded

ANGLE PROJECTION:	CREATED	MEZ	20.11.2014
FIRST	MODIFIED	MEZ	20.11.2014
	RELEASED	SLS	24.06.2015

Purchase No.: RJ45-P8806PCSC-AAT24
 Drawing No.: Customer-P(090)A624 REVISION: 0

WEIGHT: SUBREV02 T123 26.07.2022 SCALE: 3:1 SHEET 1 OF 1 DIN A3 - ASSEMBLY

Yamaichi acts with all markings of the product exclusively on behalf of the customer as service provider and not as distributor. Yamaichi is not aware of the customer's end use/application. The customer indemnifies Yamaichi from any liability towards third parties in connection with the marking - with the exception of the legal exclusions of liability according to § 309 No. 7 BGB.