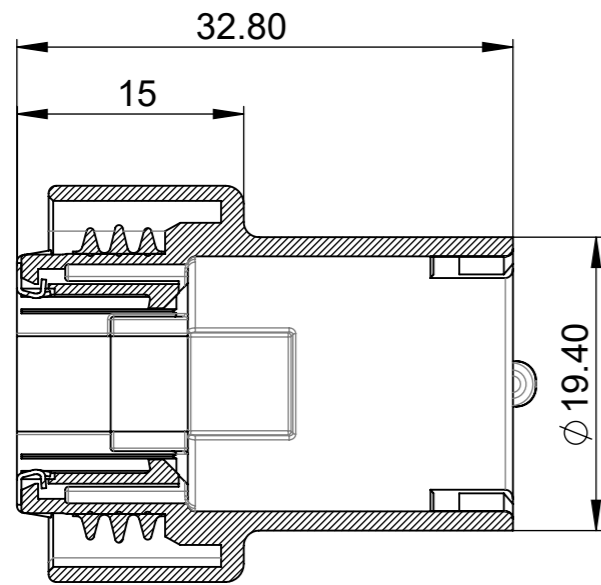
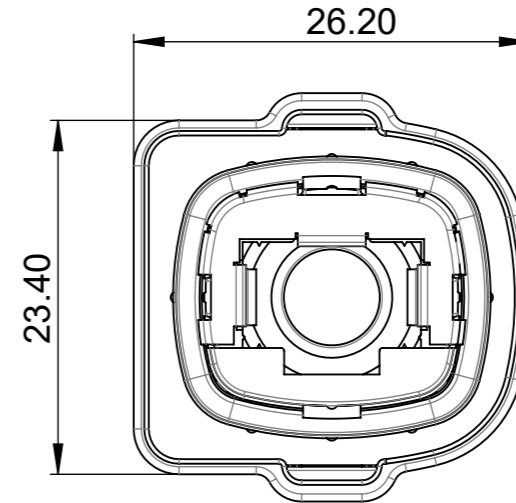
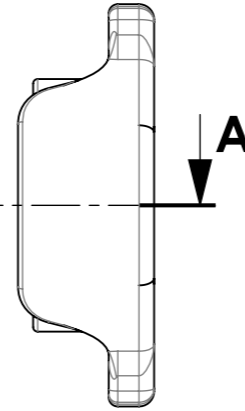
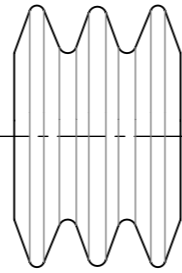
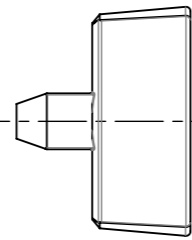
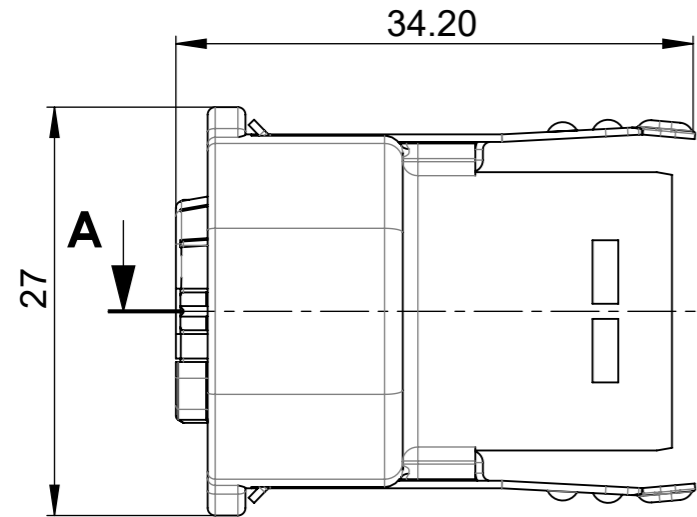
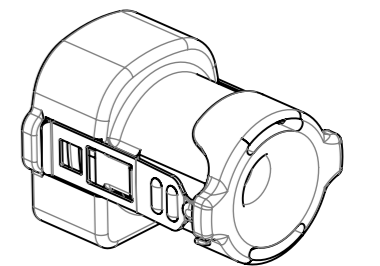
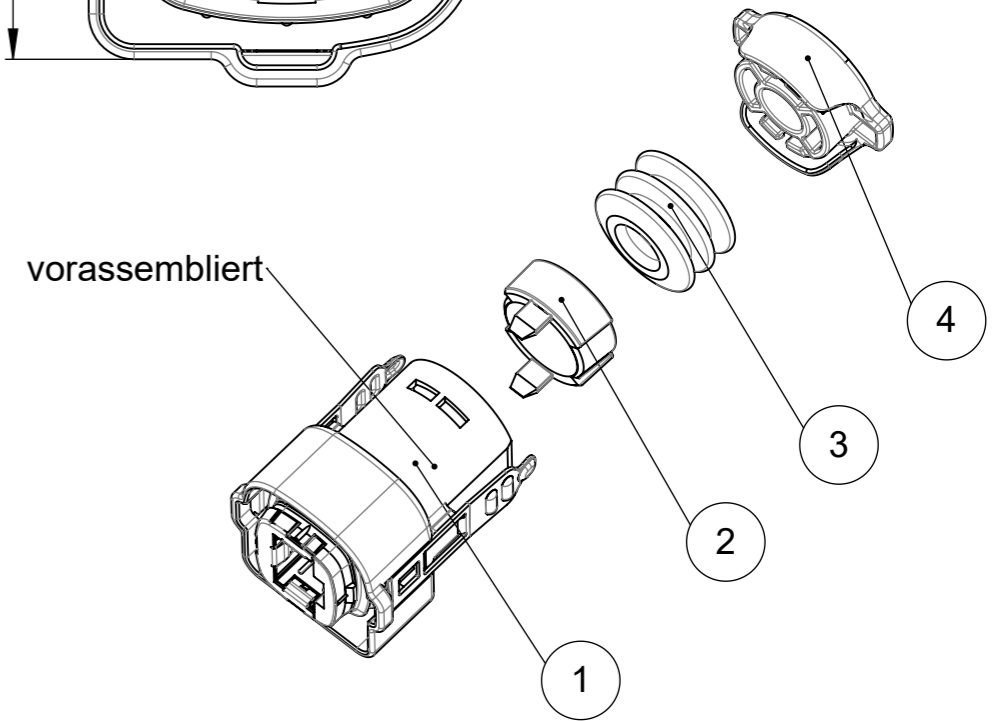
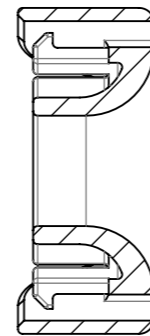
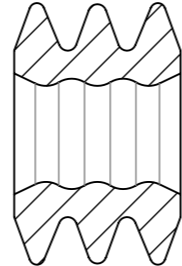
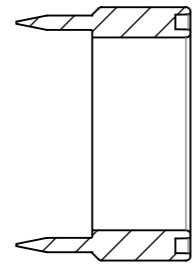


THE INFORMATION CONTAINED IN THIS DRAWING IS THE SOLE PROPERTY OF YAMAICHI ELECTRONICS DEUTSCHLAND GmbH. ANY REPRODUCTION IN PART OR WHOLE WITHOUT THE WRITTEN PERMISSION OF YAMAICHI ELECTRONICS DEUTSCHLAND GmbH IS PROHIBITED.

CONFIDENTIAL



SECTION A-A



Artikel 1 ist vorassembliert
Artikel 2,3,4 lose verpackt

Specification/Drawing subject to alteration without prior notice

ITEM NO.	PART NUMBER	BIOS	TITLE	QTY.
1	P(090)A163	820-0742	IP67 Steckergehäuse, schwarz mit Federblech	1
2	P(090)P266	82-00310	Stopper for Y-ConCover-10 / Plug	1
3	P(090)P03	82-00040	Y-ConAS-22 IP67 cable seal	1
4	P(090)P169	82-00289	IP67 Abschlussstopfen, schwarz f. Y-ConCover-10	1

RoHS compliant acc. to directive 2011/65/EU

Unless otherwise specified :
Dimensions are in millimeters
TOLERANCES
±0,2

REV.	REVISION DESCRIPTION	INITIALS	REV. DATE
△			
△			
△			
A	BOM revised, 3D updated	RUL	18.07.2017

Order / Article No. 82-00572
DO NOT SCALE DRAWING
CLASSIFICATION: IP67 cover black mounted

NAME	DATE	TITLE
DESIGN MOB	08.07.2010	Y-ConCover-10-B-E
DRAWN RUL	18.07.2017	
CHECKED RA	18.07.2017	

NOTES: ANGLE PROJECTION: FIRST

WEIGHT:	SCALE: 2:1	SHEET1 OF 1	A3 - ASSEMBLY
---------	------------	-------------	---------------

DWG NO.: Customer-P(090)A542
REVISION: A

